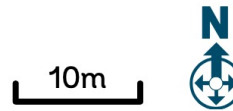
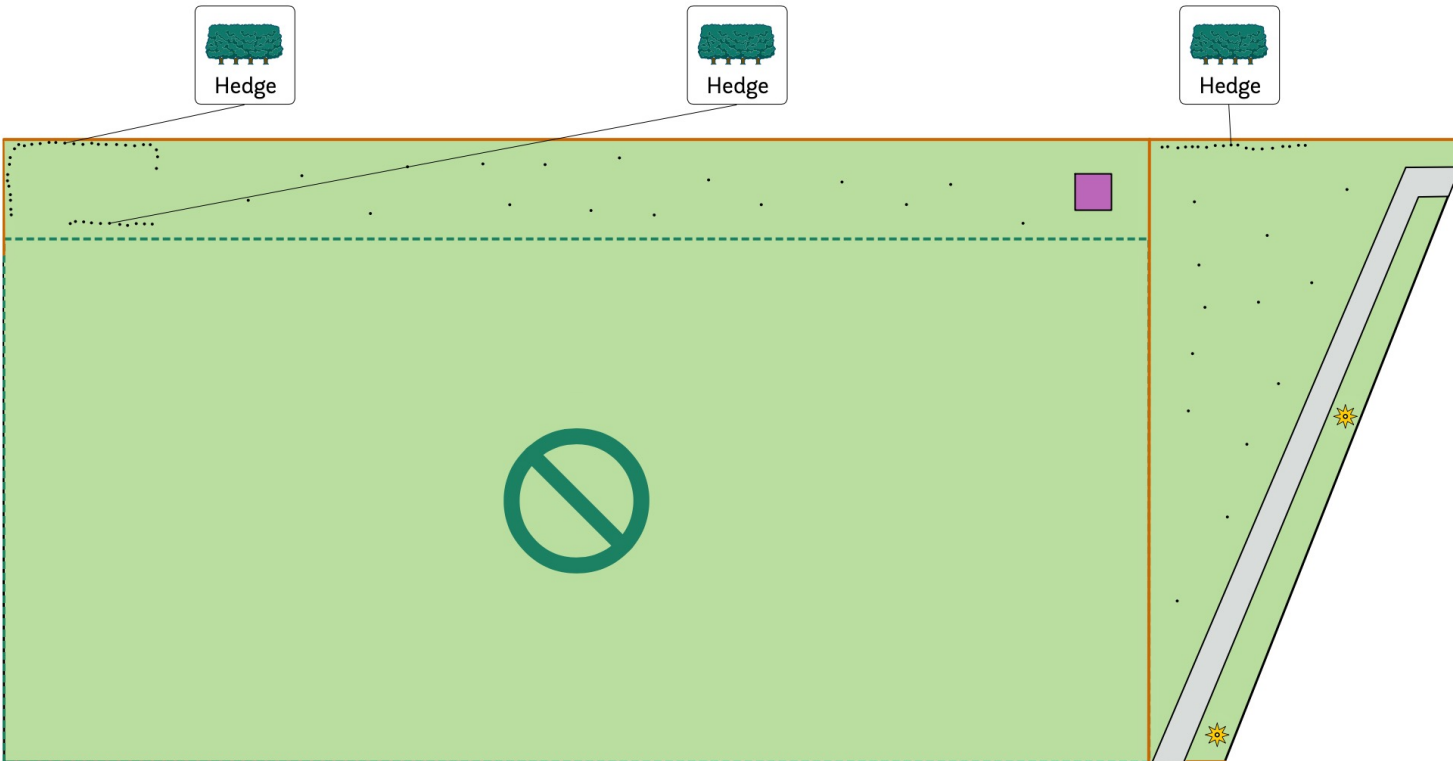


# Drakies Example Woodland Pla



	1-storey building		Overhead lines
	2-storey building		Underground pipe
	Tarmac or paving		Existing trees
	Pond or wet ground		Lamp post
	Protected area		Sign post
	Wall or fence		

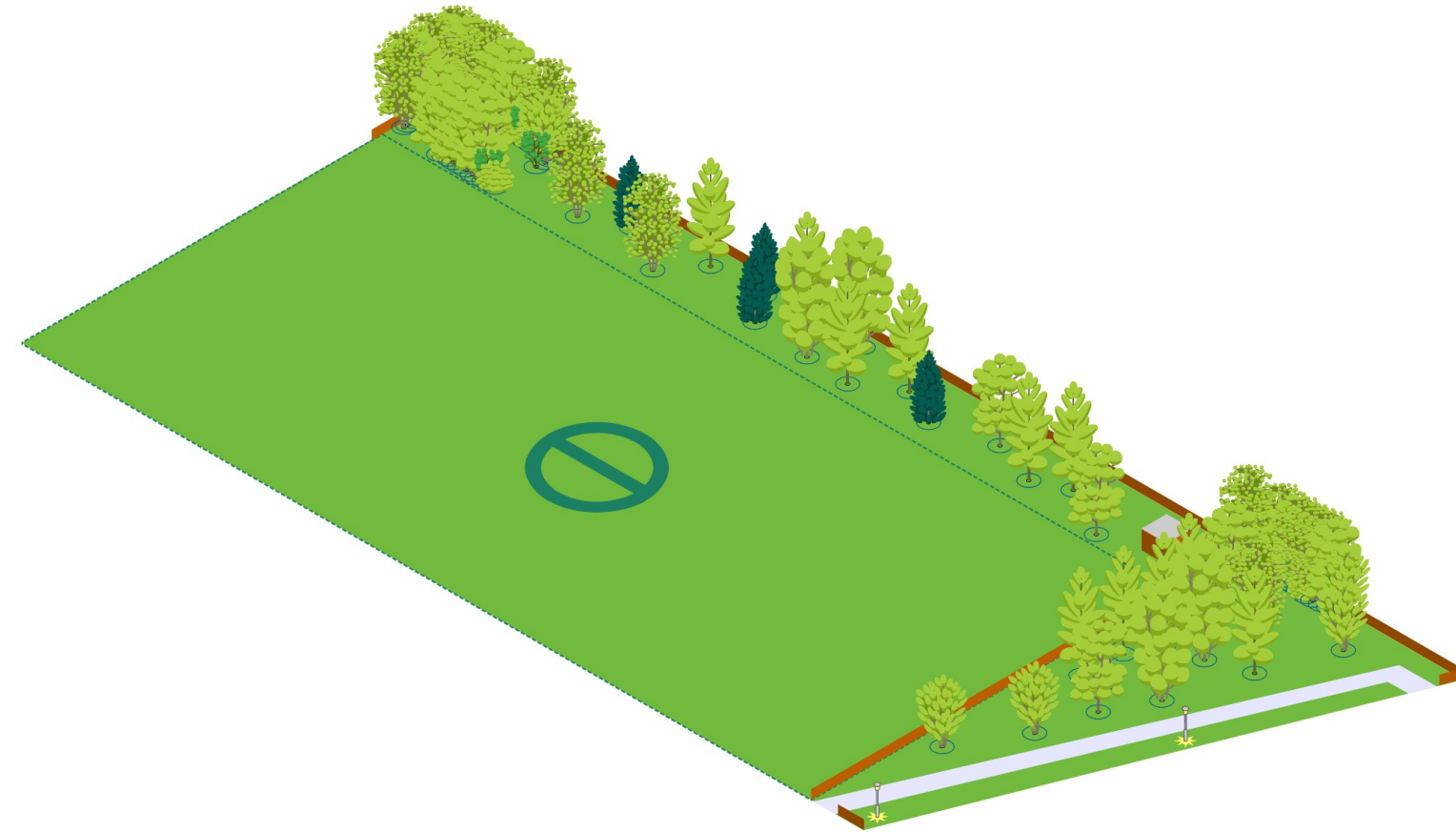





- 2 x Hedges  
60 of 60 trees planted
- 1 x Copse  
0 of 30 trees planted
- 1 x Wild wood 105 pack  
29 of 105 trees planted

**General planting guidance**

As a rough guide, trees are usually planted at about 2m intervals, but can be planted at any distance from 1-5m depending on the space and plan.

For hedging, plant staggered double rows approximately 50cm apart, with 40-50cm between each tree in the line. For more guidance see the Planting and Care Advice section of Tree Tools for Schools.



	Protected area
	Overhead lines
	Underground pipe

